


# The catalogue of Gillian Mann's art

## Prints from the 1970s

Image	Title	Date	Medium	Image size	Sheet size	Frame size	Edition	Inscriptions
	<b>series of abstract etchings, in bundle marked "Hayer exercise proofs 1976"</b>	1976	etching on paper	17.6 x 25	26.5 x 33		18 unique states	not signed, not dated
	<b>untitled - clothes hanging in front of wardrobe</b>	1977	etching on paper	25 x 39.4	38.8 x 56		1/2 & 2/2,	signed and dated lower right "Gillian Mann 1977"
	<b>untitled - interior through cracked glass</b>	1977 (proof) 1978 (edition)	aquatint, drypoint, etching on paper	25 x 40	53 x 61		proof, 1, 3-5/5	signed and dated lower right "Gillian Mann 1977"
	<b>sketch for wardrobe with clothes etching</b>		pencil on paper	25.5 x 27.5	25.5 x 27.5			not signed, not dated
	<b>untitled triptych - interior</b>		etching on paper	10.5 x 22.4	19 x 26.5			not signed, not dated



**small medallion**

etching on paper

3.5 diam 39.5 x 26.5

4 not editioned

not signed, not dated. Inscribed on plate "Gillian Mann b. AD 1939"



**A Former Life**

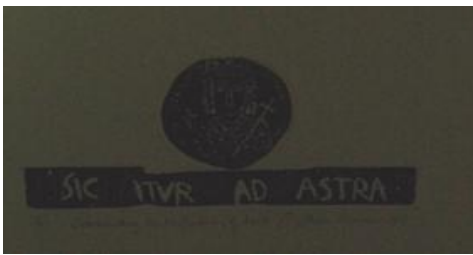
1977/1981

etching on paper

6.5 diam 21.2 x 26 cm, 39.8 x 53

proof, 1-13/13, ea, small proof 1-5/5, medium edition: 1-20/20, proof with gold leaf, medium proof 1-9/9, medium not signed not dated x 4

signed lower centre "Gillian Mann" dated lower right "1981", small proofs signed lower centre "Gillian Mann" and dated lower right "1977", medium proofs signed lower centre "Gilian Mann" and dated lower right "1980"



**Commenting on the finality of death**

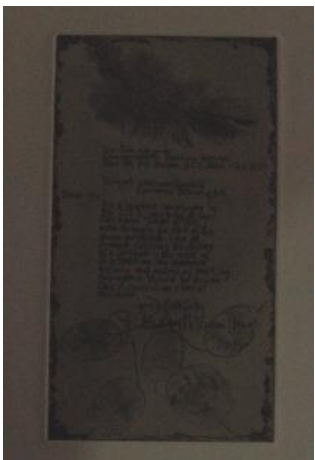
1979

etching on paper

8 x 20.2 39.5 x 27

1-4/4

signed and dated lower right "Gillian Mann 1979"



**untitled - cover letter job application**

1977

etching on paper

25.2 x 12.5 38 x 28

x9

signed upper right on plate "26.5.77" and signed lower centre "Gillian Mann Hay" on plate



**untitled - tree**

1977

etching on paper

15 x 12 53.5 x 28.8

2,5-10/10

signed lower centre "Gillian Mann" and dated lower right "1977"



**untitled - tree**

1977

etching on paper

25 x 7

44 x 28

1,5-14/14

signed and dated lower centre "Gillian Mann 1977"



**Alf & Gwen Wesson's house**

1977

etching on paper

25.3 x 35

39.5 x 53.5

44.4 x 51.2

proof 1/2 & 2/2, 2x uneditioned, 1,3-20/20, 2/20: framed

signed lower centre "Gillian Mann" and dated lower right "1977", one not signed, not dated, one signed and dated lower right "Gillian Mann 1977"



**untitled - plate from Mortification**

1977

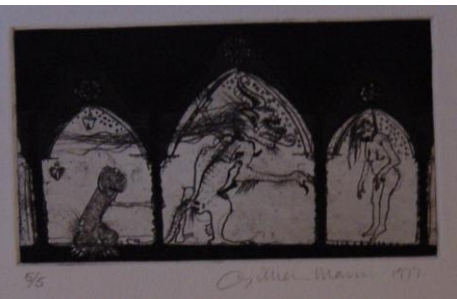
etching on paper

11.2 x 18.5

27 x 39.5

1-5/5, unsigned proof

signed lower centre "Gillian Mann" and dated lower right "1977".



**untitled - plate from Mortification**

1977

etching on paper

11.2 x 18

27 x 39.5

1-5/5

signed lower centre "Gillian Mann" and dated lower right "1977".



**untitled - plate from Mortification**

1977

etching on paper

11.2 x 18

27 x 39.5

1-5/5, 2 x proof

signed lower centre "Gillian Mann" and dated lower right "1977".



**Mortification** 1977 (proof) 1978 (edition) aquatint, drypoint, etching on paper 3 panels all 11 x 37 x 76.5 17.5 proof, 1-4/4 signed and dated lower right "Gillian Mann 1977" on proof and "Gillian Mann 1978" on edition



**untitled - Julian & friend on shore** colour etching on paper 12 x 19 14 x 41.5 not signed, not dated



**untitled - Julian & friend on shore** 1979 coloured etching on Hahnemühle 12 x 19 cm 39 x 53 cm 8-15/15, Proof: 1,3-5/5 signed and dated lower right 'Gillian Mann 1979'.



**untitled - albino budgie** 1978 etching, drypoint on paper 12.3 x 8 cm 53 x 39.3 cm 1-12/19, 15/19, 16/19, 17/19, 18/19, 19/19, unsigned proof, 3x unsigned proofs on 28 x 21.8 cm sheet signed and dated lower centre 'Gillian Mann 1978'.



**untitled - bedroom scene** 1978 etching, drypoint on paper 43.5 x 45 cm 78 x 61 cm 67.8 x 64.2 2/2' signed lower centre 'Gillian Mann'. Dated lower right '1978'.



**untitled -  
Garden  
Drawing  
Charnwood**

1978

etching  
drypoint on  
paper

50 x 45.4 51.5 x 46

9,1,6,7,8,10,1  
2,14/15,  
proof

signed and dated lower left  
"Gillian Mann 1978".



**untitled -  
orchid**

1978  
proof  
1979

etching,  
drypoint on  
paper

17.5 x 11 53 x 39.5  
cm cm

1,2,4, 6-  
10/10 Proof,  
proof 1-5/5

signed and dated lower centre  
'Gillian Mann 1978'.



**Crucifixion**

1978

colour etching  
on paper

25 x 17 39.8 x 53

2-5, 7-9/10,

signed and dated lower right  
"Gillian Mann 1978"



**Protea**

1978

coloured  
etching on  
paper

12 x 14.5 53.5 x  
39.5

3 unique  
states,  
editioned  
orange  
print: 2-  
5/12, b&w  
proof, e.a

signed lower centre "Gillian  
Mann" and dated lower right  
"1978"



**untitled -  
cane chair**

1978

etching on  
paper

22 x 35 53.5 x  
39.5

proof, red  
state: 4,5/5,  
brown state:  
1,3-9/10

signed and dated lower right  
"Gillian Mann 1978"



**untitled - tree**

c.1978

etching on paper

14.5 x 41.5

various, between : 22 x 53, 33 x 60

4 not editioned

not signed, not dated



**untitled unicorn?**

c.1978

colour photoetching on paper

11 x 18.2 20 x 27

2 not editioned

not signed, not dated



**untitled - view from window**

1978

etching on paper

8 x 25

28 x 43.5, editioned, proof: 53.3 x 39.5,

I,ii,iii, v-xv/xv, 1-20/20, proof x3, s&d proof 1-3/3

signed lower centre "Gillian Mann" dated lower right "1978"



**untitled - view from window with bamboo blind**

1978

etching on paper

11.8 x 18

39.5 x 26.8, 2x signed proof & edition: 53.5 x 39.5

uneditioned, 3-15-17-20/20, 2x signed proof

not signed, not dated. Proof & Editioned: signed and dated lower right "Gillian Mann 1978"



**untitled - window view**

1978

etching on paper

11.2 x 17.4

39.5 x 26.8, edition: 53.5 x 39.5

3-18/18, signed proof, unsigned proof, small unsigned proof

not signed, not dated. 1 x proof & Editioned: signed and dated lower right "Gillian Mann 1978",



**untitled garden scene**

1979

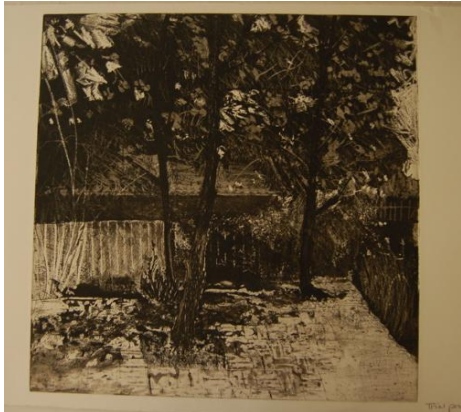
aquatint, drypoint, etching on paper

50.3 x 45

53.6 x 74.2

Trial proof

signed and dated lower right of sheet "Gillian Mann 1979"



**untitled garden scene later version of above**

1979

aquatint, drypoint, etching on paper

50.3 x 45

53.6 x 74.2

Trial proof

signed and dated lower right of sheet "Gillian Mann 1979"



**church with symbols & medallion**

1979

2 plate etching on paper

25 x 26 & 6.5 diam

39.5 x 53.5

proof

signed lower right "Gillian Mann" and dated lower left "1979"



**An entrance to Hades**

1979

etching on paper

25 x 26

39.5 x 53

2 proofs, 1-7/7

signed and dated lower right "Gillian Mann 1979"



**A drawing for a little girl when she was 4 years old**

1979

etching on paper

10.6 x 22.5

27 x 39.5

1-5/5, 2x unsigned proof

signed and dated lower right "Gillian Mann 1979"



**Ariagne**

c.1979

photoetching  
on paper

14 x 10.5 39.5 x 27

not signed, not dated



**Charnwood**

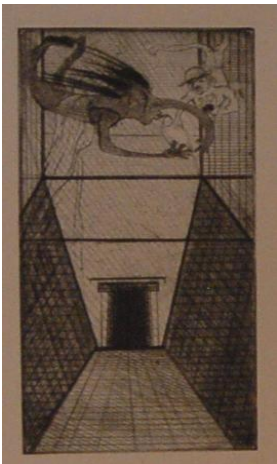
1979

pencil on paper

11.6 x  
18.5

26 x 30.5

signed and dated lower left  
"Gillian Mann 1979"



**Entrance to  
the tomb**

c.1979

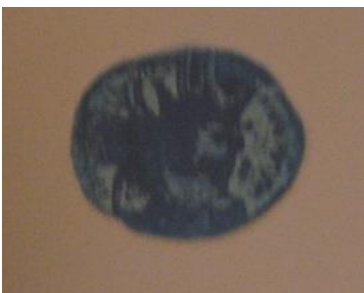
etching on  
paper

22.5 x  
11.2

39.5 x 27

2 proofs

not signed, not dated



**Julian Mann  
medallion**

c.1979

colour etching  
on paper

7.6 cm  
diam  
irreg.

27 x 19.3

not signed, not dated



**Lovely  
evening**

c.1979

etching on  
paper

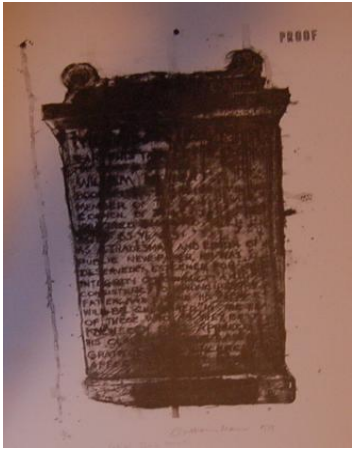
15.2 x  
10.3

26 x 20

16 present  
but not  
editioned

not signed, not dated





**My Father's Tomb Stone**

1979 lithograph on paper 49 x 31 77 x 56

proof 1-4/4 signed and dated lower right "Gillian Mann 1979"



**Sic itvr ad astra**

1979 etching on paper 38 x 20.5 53.5 x 39

black proof 1-2/2, pale proof 1-4/4, brown proof 1-4/4 signed and dated lower right "Gillian Mann 1979"



**sic itvr ad astra**

c.1979 3 plate colour etching 36 x 20.5 irreg 63.4 x 50.5

signed on lower plate, not dated



**The Beginnings of the Rain Forest at the Australian National Botanic Gardens, Canberra 1979.**

1979 Drawn on to etching plate on site with small stones and a dry point tool. Drypoint, etching on paper 29 x 22 53.5 x 39.5 56.3 x 46.3

I-vi/vi, 1,2,3,5,6 framed, 7,8,9/9 signed and dated lower right "Gillian Mann 1979"



**untitled**

1979 monoprint on paper 32.5 x 28 39 x 53

signed and dated lower right "Gillian Mann 1979"



**untitled -  
cracked  
glass interior**

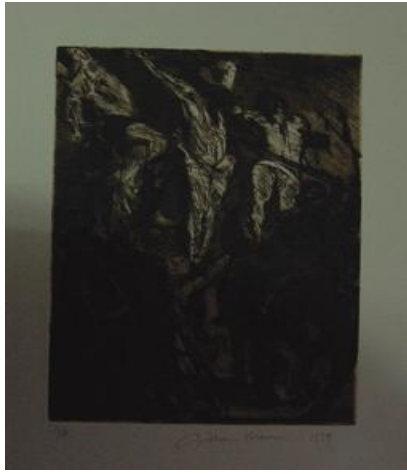
1979

etching on  
paper

25 x 23.5 53.5 x 39

proof, 1-8/8

signed lower centre "Gillian  
Mann" and dated lower right  
"1979"



**untitled -  
crucifixion  
scene**

1979

etching on  
paper

30.7 x  
22.5 39.5 x 53

1,3-8/8, proof

signed and dated lower right  
"Gillian Mann 1979"