

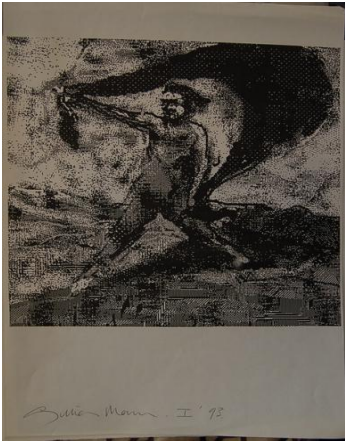




# The catalogue of Gillian Mann's art

## Digital prints

Image	Title	Date	Medium	Image size	Sheet size	Frame size	Edition	Inscriptions
	<b>"Night" first computer drawing</b>	1993	digital print on paper	9 x 9.8		17 x 20.2		signed lower left "Gillian Mann" dated lower right "1993"
	<b>Night</b>	1993	photoetching on paper	24.8 x 28.2		45.4 x 46.9	proof	signed and dated lower right "Gillian Mann 1993"
	<b>Night</b>	1993	digital print on paper	27.5 x 29	42 x 29.8			signed and dated lower left "Gillian Mann I '93"
	<b>Sketch for Night</b>	1993	watercolour on paper	39 x 35	39 x 35			not signed, not dated
	<b>untitled - hanged man</b>	c.1994	digital print mounted on wood	50 x 30	50 x 30			not signed, not dated



**1. The Meeting**

1994 digital print on  
Ilfochrome paper 22 x 19.7

58.8 x  
43.8

not signed. Label on frame  
verso "GILLIAN MANN OCT  
'94"



**17 The Anguished**

1994 digital print on  
Ilfochrome paper 21.7 x  
20.8

58.8 x  
43.8

not signed. Label on frame  
verso "GILLIAN MANN OCT  
'94"



**2. Garden of Paradise**

1994 digital print on  
Ilfochrome paper 21.8 x  
24.2

58.8 x  
43.8

not signed. Label on frame  
verso "GILLIAN MANN OCT  
'94"

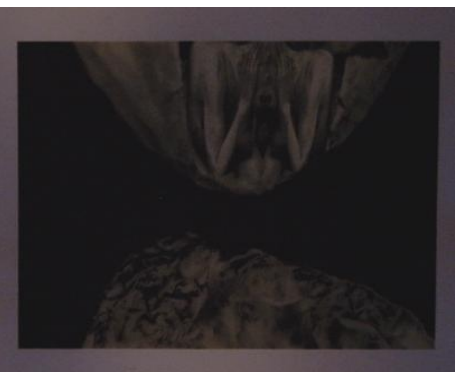


**20. The Worshippers**

1994 digital print on  
Ilfochrome paper 21.7 x 21

58.8 x  
43.8

not signed. Label on frame  
verso "GILLIAN MANN OCT  
'94"



**Death spirit II**

1994 colour inkjet  
print on paper 14 x 17 21 x 29.7

not signed, not dated



**from The  
Unacceptabil  
ity of  
Violence  
series**

1994 digital print on  
Ilfochrome  
paper 22.2 x  
21.4 29.1 x  
43.2 mount 56  
x 40.5

not signed, not dated



**Garden of  
Paradise I**

Sep-90 digital print on  
paper 21.6 x  
22.3 58.9 x  
43.6

not signed not dated. Sticker  
verso of frame "I Garden of  
Paradise / Gillian Mann / 'Oct  
'94"



**proof - from  
the  
Unacceptabil  
ity of  
Violence  
series**

1994 inkjet print on  
paper 17.3 x  
16.5 a4

proof

not signed, not dated

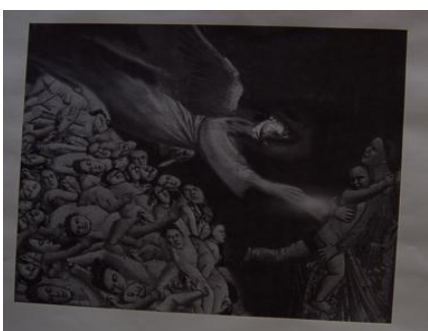


**proof - from  
the  
Unacceptabil  
ity of  
Violence  
series**

1994 inkjet print on  
paper 16.5 x  
15.8 a4

proof

not signed, not dated



**proof - from  
the  
Unacceptabil  
ity of  
Violence  
series**

1994 inkjet print on  
paper 16 x 18.8 a4

proof

not signed, not dated



**proof - from  
the  
Unacceptabil  
ity of  
Violence  
series**

1994

inkjet print on  
paper

19 x 24.4

a4

proof

not signed, not dated



**proof - from  
the  
Unacceptabil  
ity of  
Violence  
series**

1994

inkjet print on  
paper

20.1 x 27

a4

proof

not signed, not dated



**proof - from  
the  
Unacceptabil  
ity of  
Violence  
series**

1994

inkjet print on  
paper

17 x 16.8

a4

proof

not signed, not dated



**proof -  
garden of  
paradise**

1994

inkjet print on  
paper

16 x 17.8

a4

proof

not signed, not dated



**proof -  
garden of  
paradise**

1994

inkjet print on  
paper

17.3 x  
17.7

a4

proof

not signed, not dated



**proof - the good shepherd series**

1994

colour inkjet print on paper

16.5 x 16

a4

proof

not signed, not dated



**proof - the good shepherd series**

1994

inkjet print on paper

22 x 19.8

a4

proof

not signed, not dated



**proof - the good shepherd series**

1994

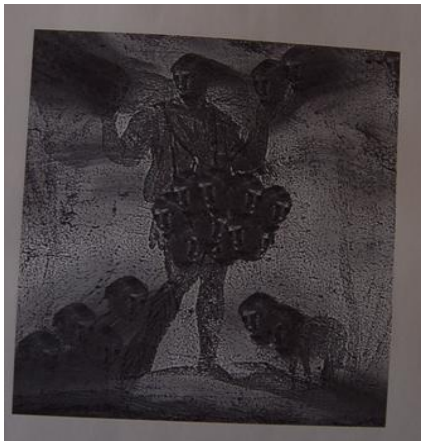
inkjet print on paper

22 x 15.9

a4

proof

not signed, not dated



**proof - the good shepherd series**

1994

inkjet print on paper

18.7 x 16.6

a4

proof

not signed, not dated



**proof - the good shepherd series**

1994

inkjet print on paper

18.7 x 16.6

a4

proof

not signed, not dated



**proof - the good shepherd series**

1994 inkjet print on paper 18.5 x 16.6 a4 proof not signed, not dated



**proof - the good shepherd series**

1994 inkjet print on paper 22 x 15.5 a4 proof not signed, not dated



**proof - the good shepherd series**

1994 inkjet print on paper 21.6 x 15.6 a4 proof not signed, not dated



**proof - the good shepherd series**

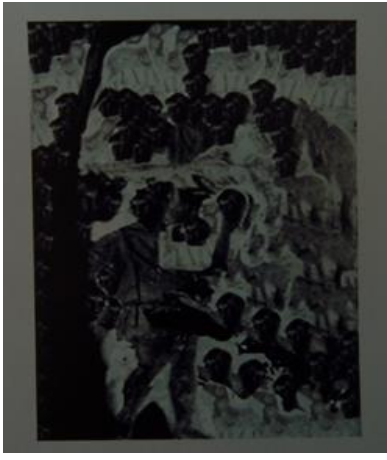
1994 inkjet print on paper 22 x 15.5 a4 not signed, not dated



**The Flagellation I, or The investigation**

1994 digital print on Ilfochrome paper 22.2 x 21.4 29.1 x 43.2 mount 56 x 40.5

signed and dated mount verso centre "Gillian mann 1994" Black prize entry stick on verso of frame backing frame distintegrated so stored in folio



**The Fold 1.** 1994 digital print on Ilfochrome paper 22.4 x 15.8 29.1 x 43.2 not signed, not dated, '9' on verso



**The Fold 2.** 1994 digital print on Ilfochrome paper 22 x 15.5 29.1 x 43.2 not signed, not dated, '10' verso



**The Garden of Paradise** 1994 digital print on Ilfochrome paper 22.2 x 24.2 29.1 x 43.2 not signed, not dated



**The Garden of Paradise 1 or 2?** 1994 digital print on Ilfochrome paper 22.2 x 22.8 29.1 x 43.2 not signed, not dated



**The Good Shepherd II / The Fold 2** 1994 digital print 21.5 x 15.5 58.8 x 43.8 signed & dated rear of frame "Gillian Mann 1994"



**The Good Shepherd III / 3 The Fold**

1994

digital print

21.5 x  
15.5

58.8 x  
43.8

signed and dated rear of frame  
upper centre "Gillian Mann  
1994"



**The Good Shepherd Series: 4. The Gatherer of Souls**

1994

digital print on  
Ilfochrome  
paper

22.3 x  
19.7

58.8 x  
43.8

signed and dated frame verso  
upper centre "Gillian Mann  
1994"



**The Good Shepherd Series: In the fold I**

1994

digital print

21.5 x  
15.5

58.8 x  
43.8

signed & dated rear of frame  
"Gillian Mann 1994"



**The Good Shepherd Series: The Dreamer / Dreams 5**

1994

digital print on  
paper

22 x 15.5

58.8 x  
43.8

signed back of frame upper  
centre "Gillian Mann 1994"



**The Good Shepherd Series: The Encounter**

1994

digital print on  
Ilfochrome  
paper

21.7 x  
19.9

58.8 x  
43.8

signed & dated rear of frame  
"Gillian Mann 1994"





**The Suffering  
no. 2: The  
Abyss**

1994 digital print on  
Ilfochrome paper 21.7 x 21

58.8 x  
43.8

signed and dated frame  
verso "Gillian Mann 1994"  
& Blake prize entry sticker



**Travelling  
down**

1999 digital print on  
Kodak professional  
paper 61.4 x 77.3 x  
45.3 50.5

text on image file "gillian mann  
1999"



**Pieta**

2001 digital print  
on paper  
mounted on  
board

not signed, not dated - Blake  
Prize entry 2002 adhesive label  
verso with name & address of  
Gillian Mann & title of work.